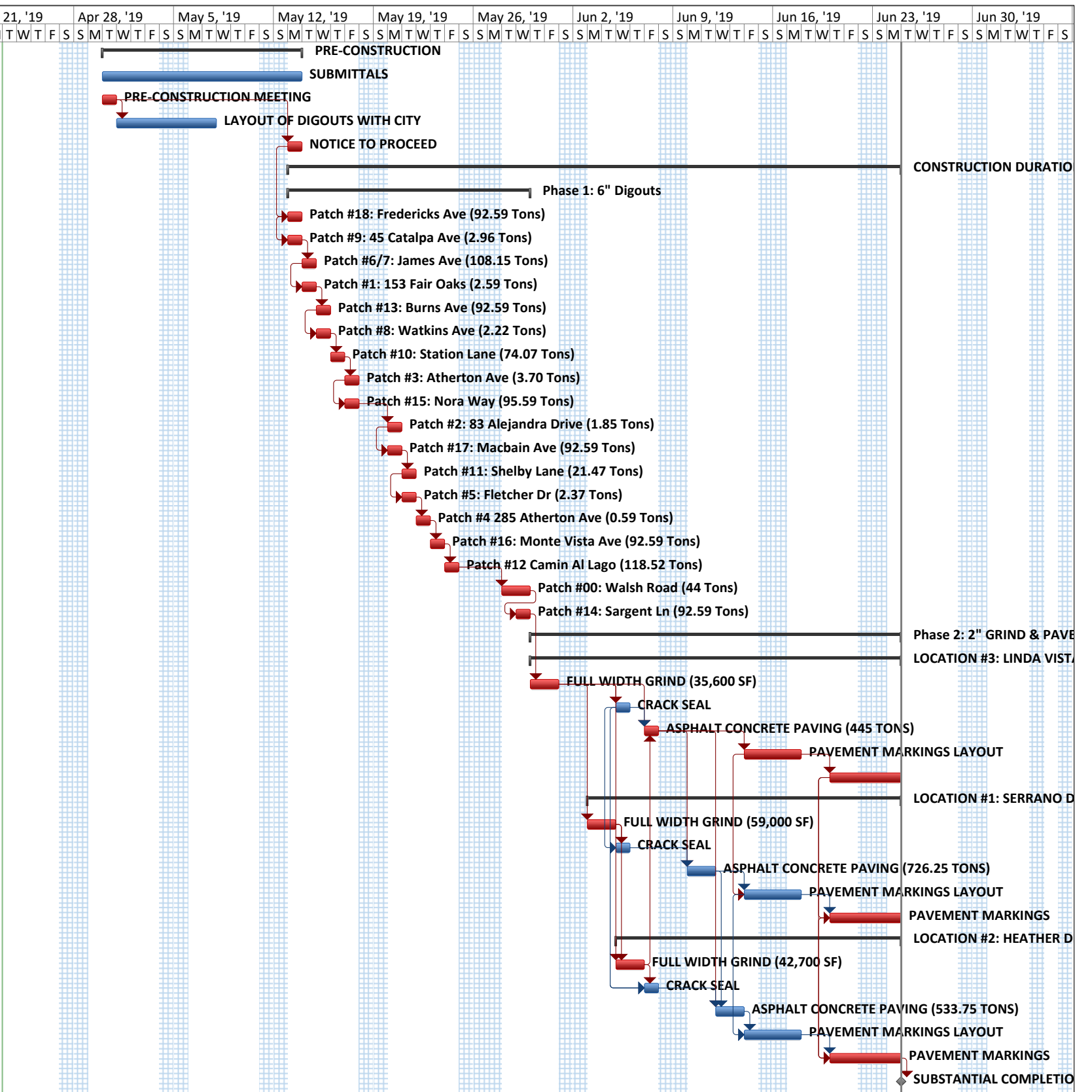


ID	Resource Names	Task Name	Duration	Start	Finish	% Complete	Apr 21, '19	Apr 28, '19	May 5, '19	May 12, '19	May 19, '19	May 26, '19	Jun 2, '19	Jun 9, '19	Jun 16, '19	Jun 23, '19	Jun 30, '19																							
							M	T	W	T	F	S	S	M	T	W	T	F	S	S	M	T	W	T	F	S	S	M	T	W	T	F	S	S	M	T	W	T	F	S
1		PRE-CONSTRUCTION	10 days	Tue 4/30/19	Mon 5/13/19	0%																																		
2	INTERSTATE	SUBMITTALS	10 days	Tue 4/30/19	Mon 5/13/19	0%																																		
3	CITY,INTERSTATE	PRE-CONSTRUCTION MEETING	1 day	Tue 4/30/19	Tue 4/30/19	0%																																		
4	CITY,INTERSTATE	LAYOUT OF DIGOUTS WITH CITY	5 days	Wed 5/1/19	Tue 5/7/19	0%																																		
5	CITY	NOTICE TO PROCEED	1 day	Mon 5/13/19	Mon 5/13/19	0%																																		
6		CONSTRUCTION DURATION 30 DAYS	30 days	Mon 5/13/19	Mon 6/24/19	0%																																		
7		Phase 1: 6" Digouts	12 days	Mon 5/13/19	Wed 5/29/19	0%																																		
8	INTERSTATE	Patch #18: Fredericks Ave (92.59 Tons)	1 day	Mon 5/13/19	Mon 5/13/19	0%																																		
9	INTERSTATE	Patch #9: 45 Catalpa Ave (2.96 Tons)	1 day	Mon 5/13/19	Mon 5/13/19	0%																																		
10	INTERSTATE	Patch #6/7: James Ave (108.15 Tons)	1 day	Tue 5/14/19	Tue 5/14/19	0%																																		
11	INTERSTATE	Patch #1: 153 Fair Oaks (2.59 Tons)	1 day	Tue 5/14/19	Tue 5/14/19	0%																																		
12	INTERSTATE	Patch #13: Burns Ave (92.59 Tons)	1 day	Wed 5/15/19	Wed 5/15/19	0%																																		
13	INTERSTATE	Patch #8: Watkins Ave (2.22 Tons)	1 day	Wed 5/15/19	Wed 5/15/19	0%																																		
14	INTERSTATE	Patch #10: Station Lane (74.07 Tons)	1 day	Thu 5/16/19	Thu 5/16/19	0%																																		
15	INTERSTATE	Patch #3: Atherton Ave (3.70 Tons)	1 day	Fri 5/17/19	Fri 5/17/19	0%																																		
16	INTERSTATE	Patch #15: Nora Way (95.59 Tons)	1 day	Fri 5/17/19	Fri 5/17/19	0%																																		
17	INTERSTATE	Patch #2: 83 Alejandra Drive (1.85 Tons)	1 day	Mon 5/20/19	Mon 5/20/19	0%																																		
18	INTERSTATE	Patch #17: Macbain Ave (92.59 Tons)	1 day	Mon 5/20/19	Mon 5/20/19	0%																																		
19	INTERSTATE	Patch #11: Shelby Lane (21.47 Tons)	1 day	Tue 5/21/19	Tue 5/21/19	0%																																		
20	INTERSTATE	Patch #5: Fletcher Dr (2.37 Tons)	1 day	Tue 5/21/19	Tue 5/21/19	0%																																		
21	INTERSTATE	Patch #4 285 Atherton Ave (0.59 Tons)	1 day	Wed 5/22/19	Wed 5/22/19	0%																																		
22	INTERSTATE	Patch #16: Monte Vista Ave (92.59 Tons)	1 day	Thu 5/23/19	Thu 5/23/19	0%																																		
23	INTERSTATE	Patch #12 Camin Al Lago (118.52 Tons)	1 day	Fri 5/24/19	Fri 5/24/19	0%																																		
24	INTERSTATE	Patch #00: Walsh Road (44 Tons)	2 days	Tue 5/28/19	Wed 5/29/19	0%																																		
25	INTERSTATE	Patch #14: Sargent Ln (92.59 Tons)	1 day	Wed 5/29/19	Wed 5/29/19	0%																																		
26	INTERSTATE	Phase 2: 2" GRIND & PAVE	18 days	Thu 5/30/19	Mon 6/24/19	0%																																		
27		LOCATION #3: LINDA VISTA	18 days	Thu 5/30/19	Mon 6/24/19	0%																																		
28	INTERSTATE	FULL WIDTH GRIND (35,600 SF)	2 days	Thu 5/30/19	Fri 5/31/19	0%																																		
29	INTERSTATE	CRACK SEAL	1 day	Wed 6/5/19	Wed 6/5/19	0%																																		
30	INTERSTATE	ASPHALT CONCRETE PAVING (445 TONS)	1 day	Fri 6/7/19	Fri 6/7/19	0%																																		
31		PAVEMENT MARKINGS LAYOUT	2 days	Fri 6/14/19	Mon 6/17/19	0%																																		
32		PAVEMENT MARKINGS	3 days	Thu 6/20/19	Mon 6/24/19	0%																																		
33		LOCATION #1: SERRANO DRIVE & PATRICIA DR	16 days	Mon 6/3/19	Mon 6/24/19	0%																																		
34	INTERSTATE	FULL WIDTH GRIND (59,000 SF)	2 days	Mon 6/3/19	Tue 6/4/19	0%																																		
35	INTERSTATE	CRACK SEAL	1 day	Wed 6/5/19	Wed 6/5/19	0%																																		
36	INTERSTATE	ASPHALT CONCRETE PAVING (726.25 TONS)	2 days	Mon 6/10/19	Tue 6/11/19	0%																																		
37		PAVEMENT MARKINGS LAYOUT	2 days	Fri 6/14/19	Mon 6/17/19	0%																																		
38		PAVEMENT MARKINGS	3 days	Thu 6/20/19	Mon 6/24/19	0%																																		
39		LOCATION #2: HEATHER DRIVE	14 days	Wed 6/5/19	Mon 6/24/19	0%																																		
40	INTERSTATE	FULL WIDTH GRIND (42,700 SF)	2 days	Wed 6/5/19	Thu 6/6/19	0%																																		
41	INTERSTATE	CRACK SEAL	1 day	Fri 6/7/19	Fri 6/7/19	0%																																		
42	INTERSTATE	ASPHALT CONCRETE PAVING (533.75 TONS)	2 days	Wed 6/12/19	Thu 6/13/19	0%																																		
43		PAVEMENT MARKINGS LAYOUT	2 days	Fri 6/14/19	Mon 6/17/19	0%																																		
44		PAVEMENT MARKINGS	3 days	Thu 6/20/19	Mon 6/24/19	0%																																		
45		SUBSTANTIAL COMPLETION	0 days	Mon 6/24/19	Mon 6/24/19	0%																																		



Town of Atherton - 2019 Street Maint Tue 4/23/19	Task		Project Summary		Inactive Milestone		Manual Summary Rollup		Deadline	
	Split		External Tasks		Inactive Summary		Manual Summary		Critical	
	Milestone		External Milestone		Manual Task		Start-only		Critical Split	
	Summary		Inactive Task		Duration-only		Finish-only		Progress	